



**VOSTEX**

EST. 1926

**RE\_BIRTH**



**FW 2022\_23**





**RE\_BIRTH**

—  
**FW 2022\_23**

# FW 2022\_23 RE\_BIRTH

---

Every day we have the opportunity to begin again; letting go of past moments and embracing those to come...

Luckily, fashion can still lift spirits and bring this much-needed dose of joy. Fashion is being reborn now, thanks to new colors enabling us to do the same.

So, here we are! New season, new styles!

An epic **Vostex Fashion** collection of new trims & accessories; blurring the lines between fashion and art & expressing an unexpected breath of fresh air; a **Re\_Birth!**

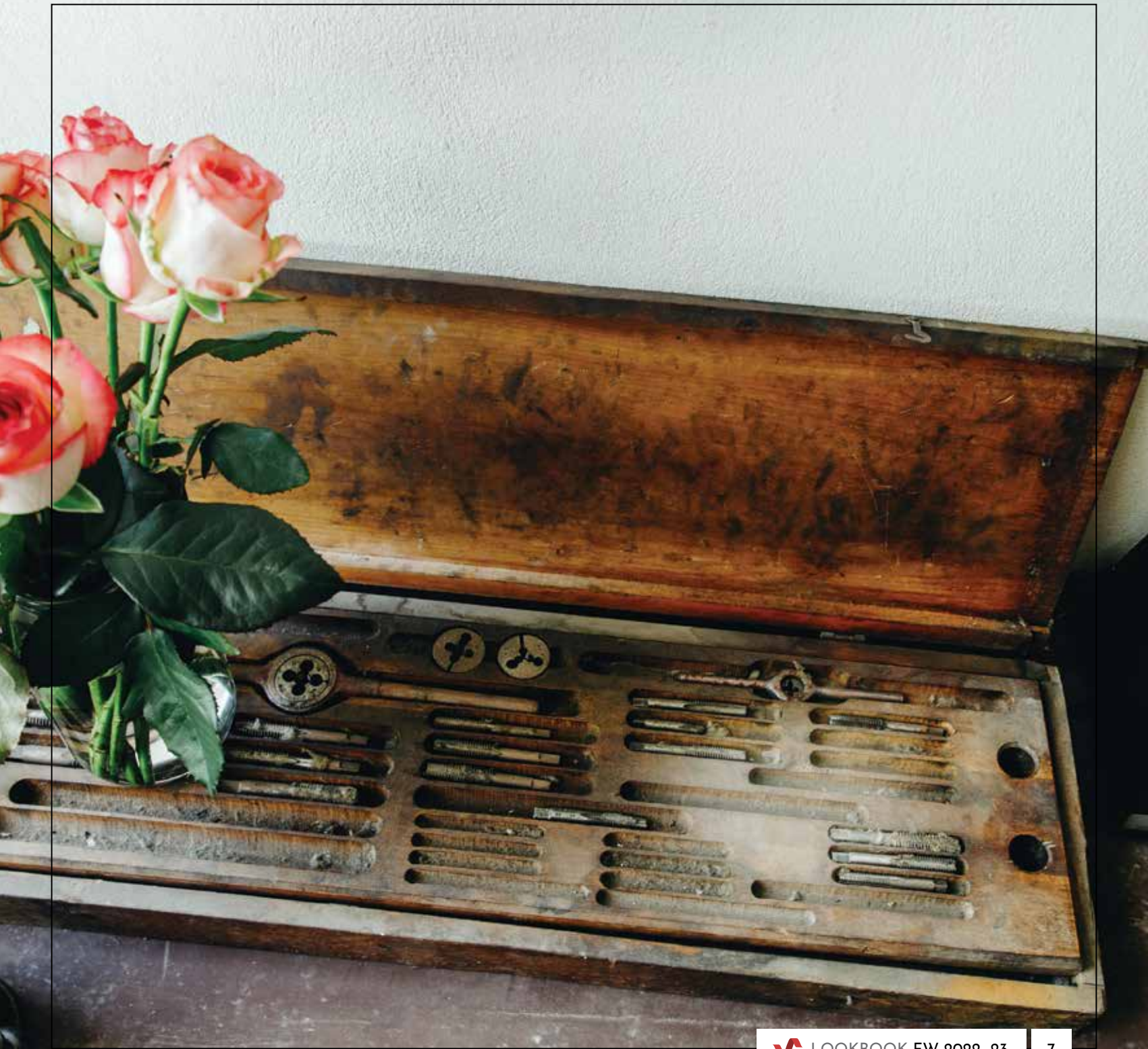
Each unique colour shade in this curated collection was hand-picked using key fashion trend forecasts & our picky style instinct!

With focus on cultural sustainability and artistic diversity we are undertaking a brand-new journey of fashion for **FW 2022\_23**.

Discover here the best inspirations and hottest new trends!

**#vostexfashion #rebirth #lookbook**





# Precious Coral



An animating and life-affirming coral hue with a golden undertone that energizes and enlivens with a softer edge... A playful shade of orange cited for its comforting nature, ready to match every lifestyle creation!





- 1. Ribbon 1620-7-025-0181
- 2. Ribbon 1620-5-055-0107
- 3. Ribbon 1762-5-025-0111

- 4. Ribbon 1966-5-040-0105
- 5. Belt 3020-0000-2209





5



1

2

3

4

5

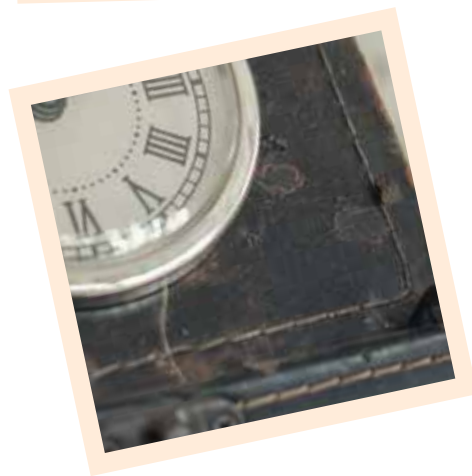




1. Tape 1557-5-025-0114
2. Tape 1550-5-040-0107
3. Tape 1544-6-040-0175

4. Tape 1557-5-040-0146
5. Tape 1557-2-040-0157

# Country Green



The green serenity of a country garden; a dark, subdued shade exuding a rich, earthy appearance, that can both soften or spice up your looks.

*Messing with time!*



## Serenity in color



1. Ribbon 1407-5-015-0103
2. Flat Cord 1638-5-010-0132
3. Ribbon 1489-5-015-0105
4. Elastic 2809-6-050-0101
5. Elastic 2839-0-019-0101
6. Elastic 2165-6-050-0102
7. Elastic 2024-6-040-0125



4

5

6

7

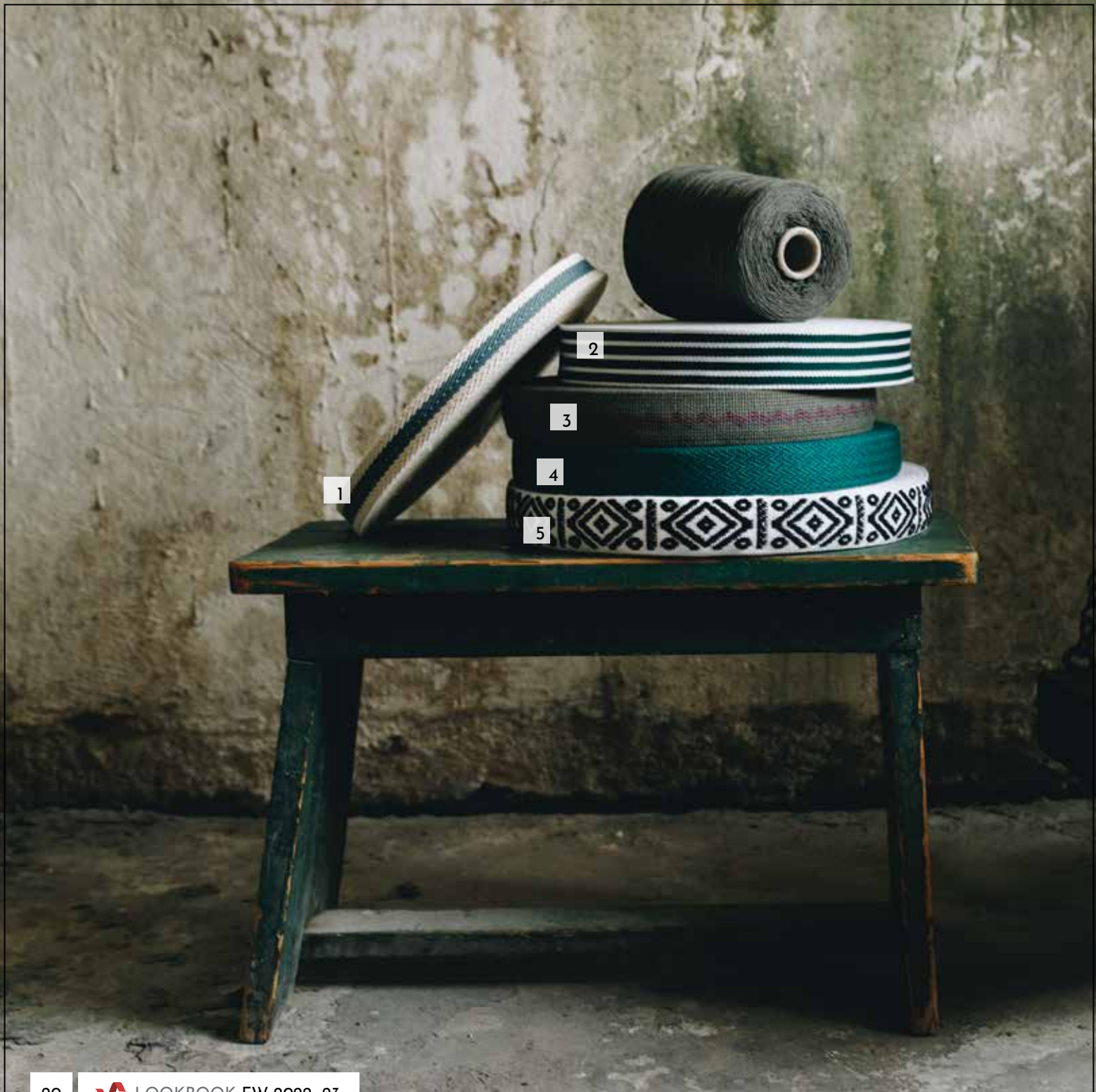
Moments in time...





1. Ribbon 1763-O-030-0105
2. Ribbon 1603-O-020-0101
3. Ribbon 1620-5-025-0146
4. Printed Ribbon 472-1481-O-020-26-02
5. Ribbon 1481-O-025-0121
6. Bag Strap 3020-0010-2076





1

2

3

4

5



1. Tape 1617-2-025-0114
2. Tape 1377-5-040-0105
3. Tape 1551-5-040-0102
4. Tape 1372-7-035-0103
5. Tape 1362-5-040-0143
6. Bag Strap 3020-0027-2076

# Timeless Blue



If you're looking for a burst of energy this is your blue... evoking feelings of strength and boldness; with a tradition that has lasted the test of time.





1. Elastic 2151-5-030-0102
2. Elastic 2100-5-040-0212
3. Elastic 2032-5-080-0103
4. Elastic 2022-5-040-0102

5. Fabric 321-9-111-006
6. Ribbon 1767-5-050-0106
7. Pom-Pons 321-3-0-300-045-103
8. Bag 6044-414-0001



*Blue velvet...*





*Surrendering...*



*...to the blue*



1. Tape 1567-5-060-0106
2. Tape 1575-7-030-0150
3. Tape 1379-5-025-0103
4. Tape 1557-2-040-0117

# Purple Elixir



Lots of purple is coming your way! Deep, dark and mysterious. Stands for renewal and joyful pursuits and makes you feel pretty and lighthearted... It's this shade of purple we've become obsessed with!





1. Tape 1398-0-030-0101  
2. Tape 1595-5-025-0110  
3. Tape 1617-6-025-0107  
4. Tape 1550-5-050-0105

5. Tape 1544-1-050-0101  
6. Bag Strap 3020-0007-2076  
7. Belt 3020-0000-2201



# Sophisticated Gray

Your ultimate gray! This deep-toned shade exudes elegance and makes a strong fashion statement. When combined, it creates an uplifting feeling that everything is going to get... brighter!



*Shameless emotion!*





1

2

3

4

5

- 1. Ribbon 1607-6-025-0123
- 2. Ribbon 1620-6-035-0102
- 3. Ribbon 1620-6-025-0106

- 4. Ribbon 1657-6-028-0103
- 5. Ribbon 1620-0-030-0212
- 6. Bag Strap 3020-0029-2076





6





*Shades of elegance!*

- 1. Bag Strap 3020-0028-2076
- 2. Tape 1391-5-080-0102
- 3. Fabric 321-9-111-008
- 4. Bag 6044-418-0001

# *Creamy Beige*

This pale, shaded, cosmetic beige with a sandy undertone is here to stay! Not to be outdone by any other color trends, this iconic color captures the cool sophistication of beige with the warmth of pale gray.







1. Elastic 2500-5-040-0109
2. Elastic 2553-5-040-0102
3. Elastic 2164-2-035-0101
4. Elastic 2020-6-040-0117

5. Elastic 2172-5-030-0104
6. Tape 1550-5-030-0105
7. Ribbon 1930-5-025-0101

8. Ribbon 1932-7-043-0102
9. Fabric 321-9-111-023
10. Bag 6044-413-0001

*Living in a dream!*



6

7

10

8

9





undertone is here to stay

1. Ribbon 1496-6-015-0103
2. Ribbon 1620-5-015-0238
3. Ribbon 1620-5-015-0128

4. Ribbon 1620-5-012-0128
5. Ribbon 1620-5-040-0232





1. Belt 3020-0000-2199  
2. Tape 1617-5-025-0105  
3. Tape 1550-5-025-0102  
4. Tape 1541-2-038-0110

5. Tape 1617-5-025-0105  
6. Tape 1589-7-040-0102  
7. Tape 1574-5-040-0109

# Deep Violet



A dramatically provocative and thoughtful purple shade, deep violet communicates originality, ingenuity and visionary thinking that points us toward the future. The perfect color awaits...





1

2

3

4

5

1. Ribbon 1620-5-015-0114  
2. Ribbon 1620-5-030-0128  
3. Ribbon 1778-0-025-0101

4. Ribbon 1606-5-025-0135  
5. Tape 1886-0-015-0102  
6. Belt 3020-0001-1449



6



1. Belt 3020-0000-2210
2. Belt 3020-0000-2205



2

# Sweet Apricot



Still very fresh and autumnal, a color that attracts attention without aggression, sweet apricot inspires creativity, optimism and openness... One of the hottest hues of orange for this fall!



*Taste of fresh!*



1. Tape 1566-6-040-0105
2. Ribbon 1867-7-050-0107
3. Tape 1344-2-025-0101

4. Ribbon 1763-5-025-0103
5. Belt 3020-0000-2206





1



1. Bag strap 3020-0030-2076

# Hybrid Violet



*Every rose has  
its thorn!*

The perfect color for those who want to venture into the fashion color trend! An intriguing, romantic color that will mesmerize others and will definitely be, a great addition to your "floral pattern" arrangements...









1. Belt 3020-0001-1083
2. Elastic 2138-6-050-0109
3. Elastic 2035-1-060-0102

4. Elastic 2023-5-050-0133
5. Elastic 2144-5-030-0101
6. Elastic 2166-1-060-0107



1. Ribbon 1767-7-040-0114  
2. Tape 1617-6-040-0112  
3. Tape 1365-5-040-0115  
4. Tape 1617-6-040-0113

5. Tape 1382-5-040-0112  
6. Bag 6044-417-0001  
7. Tape 1633-5-040-0107  
8. Fabric 321-9-111-005



6

7

8

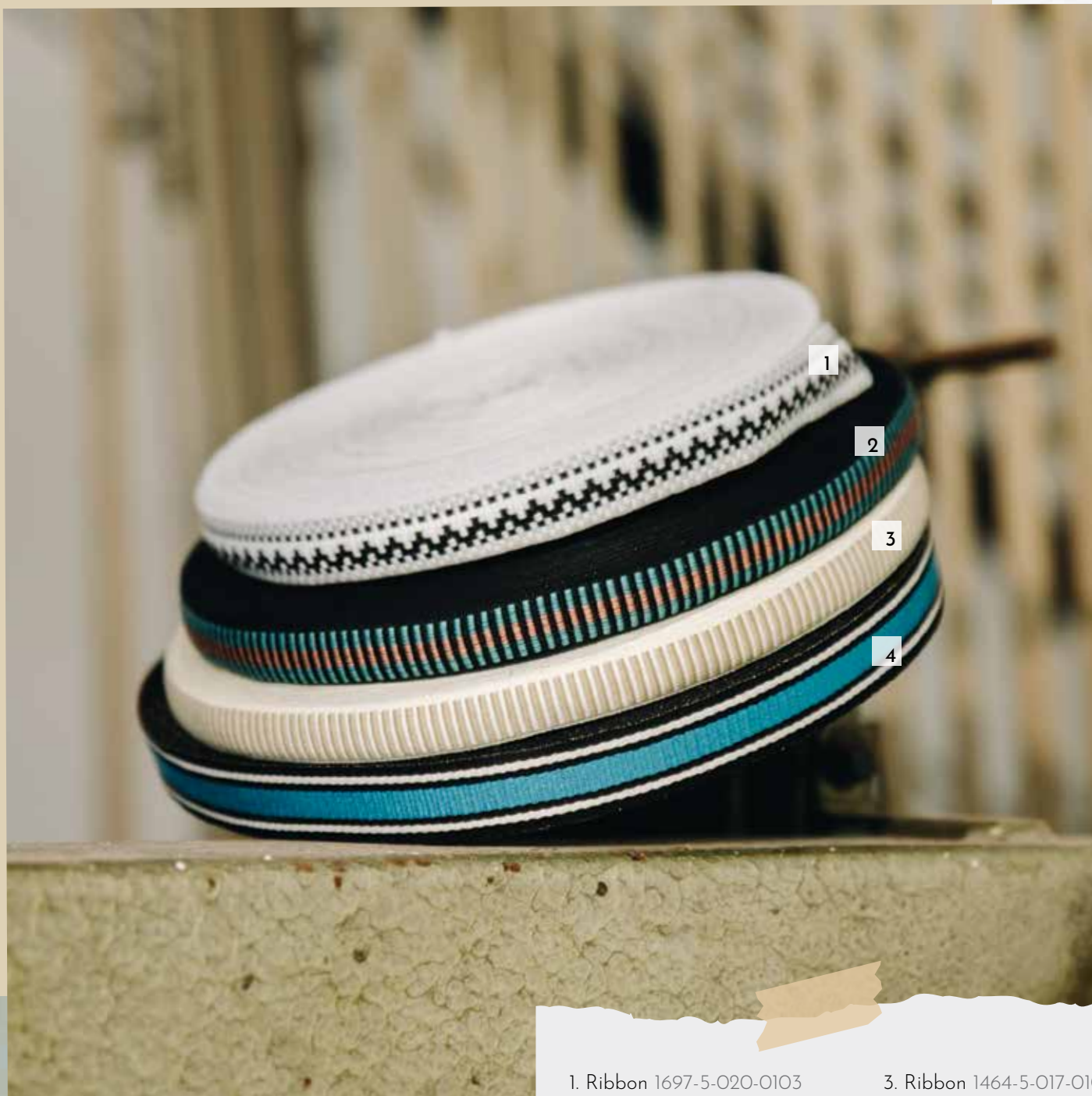
# Playful Blue

This delicate and very bright color is a classic choice that's easy on the eyes; a baby blue shade that is so energetic, fresh, young, and spirited. A symbol of peace and tranquility!



*Peace and tranquility!*





1. Ribbon 1697-5-020-0103  
2. Ribbon 1464-5-020-0109

3. Ribbon 1464-5-017-0102  
4. Tape 1567-6-022-0101







1

2

3

4

5

- 1. Ribbon 1498-5-040-0103
- 2. Tape 1592-5-040-0146
- 3. Tape 1594-5-025-0112

- 4. Tape 1589-6-040-0112
- 5. Tape 1550-5-040-0110
- 6. Belt 3020-0000-2207



6

# Flame Red



A powerful red representing an inner feeling which leads to new ways of change & provokes an instinctive emotional reaction...  
A strong, deep hue that grabs your attention with its boldness and sophistication.







*Boldness...*

1. Tape 1341-6-040-0101
2. Tape 1032-5-050-0101
3. Tape 1385-5-040-0110
4. Tape 1382-5-050-0102
5. Ribbon 1620-6-010-0128
6. Ribbon 1509-5-010-0102
7. Rib Tape 4601-6-1-1-015-0105

*Embracing emotions*



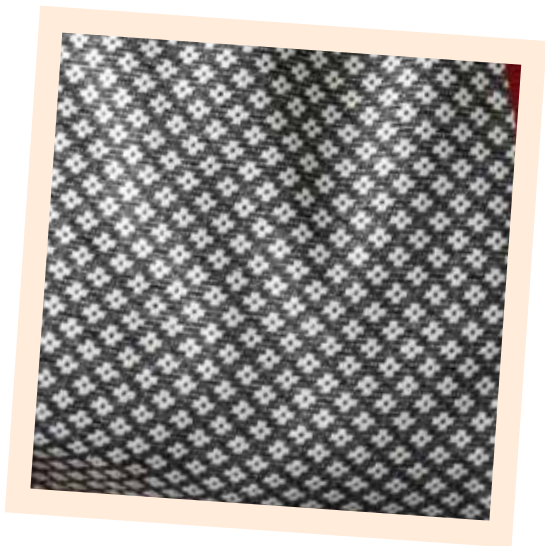
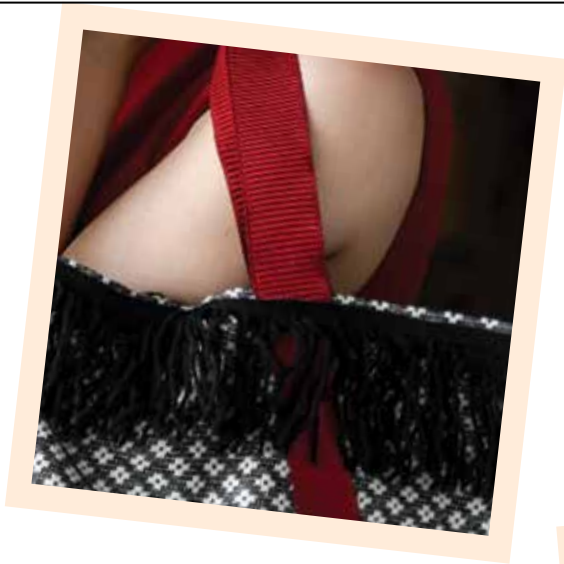




*Dividing time...*

- 1. Bag Strap 3020-0026-2076
- 2. Elastic 2156-1-030-0103
- 3. Elastic 2101-6-040-0113
- 4. Elastic 2400-0-040-0121

- 5. Elastic 2023-5-050-0130
- 6. Elastic 2100-5-045-0114
- 7. Elastic 2100-5-045-0113



# Reinventing elegance



2

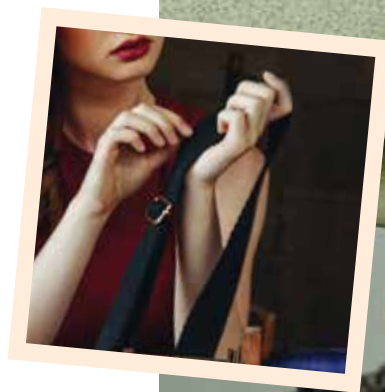
1

3

4

- 1. Bag 6044-415-0001
- 2. Tape 1549-5-040-0110
- 3. Fringe 317-3-0-141-090-0102
- 4. Fabric 321-9-111-012

# Deep Night



The color of the sky on a moonless night, is once again a fusion of blue, green & black... Exceeding your color expectations, mysterious, dark and yet unexpected, it will ultimately give a sophisticated touch in your collection.





1. Elastic 2590-0-020-0102
2. Elastic 2173-5-025-0103
3. Elastic 2400-6-050-0113
4. Elastic 2352-2-040-0103
5. Elastic 2888-5-050-0101

6. Bag 6044-421-0001
7. Tape 1346-6-055-0101
8. Ribbon 1620-6-022-0101
9. Fabric 321-9-111-014

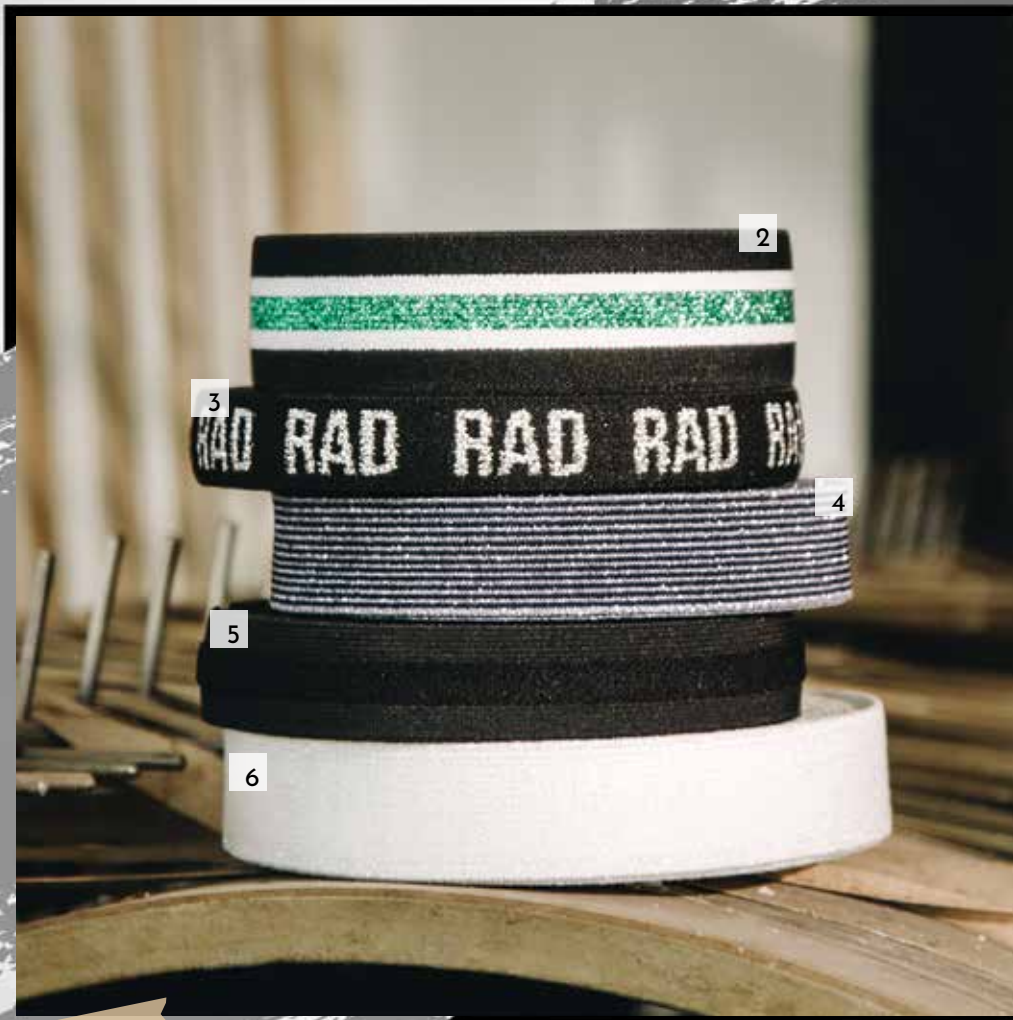


*Wear it like you mean it*



1





1. Belt 3020-0000-2211
2. Elastic 2101-1-040-0183
3. Elastic 2582-1-025-0101

4. Elastic 2014-6-030-0112
5. Elastic 2172-0-030-0101
6. Elastic 2352-6-035-0105



1



1. Bag Strap 3020-0031-2076



1. Tape 1557-2-100-0101
2. Tape 1550-6-040-0119
3. Tape 1544-6-030-0126

4. Tape 1546-2-040-0111
5. Tape 1557-6-050-0101
6. Bag Strap 3020-0011-2076



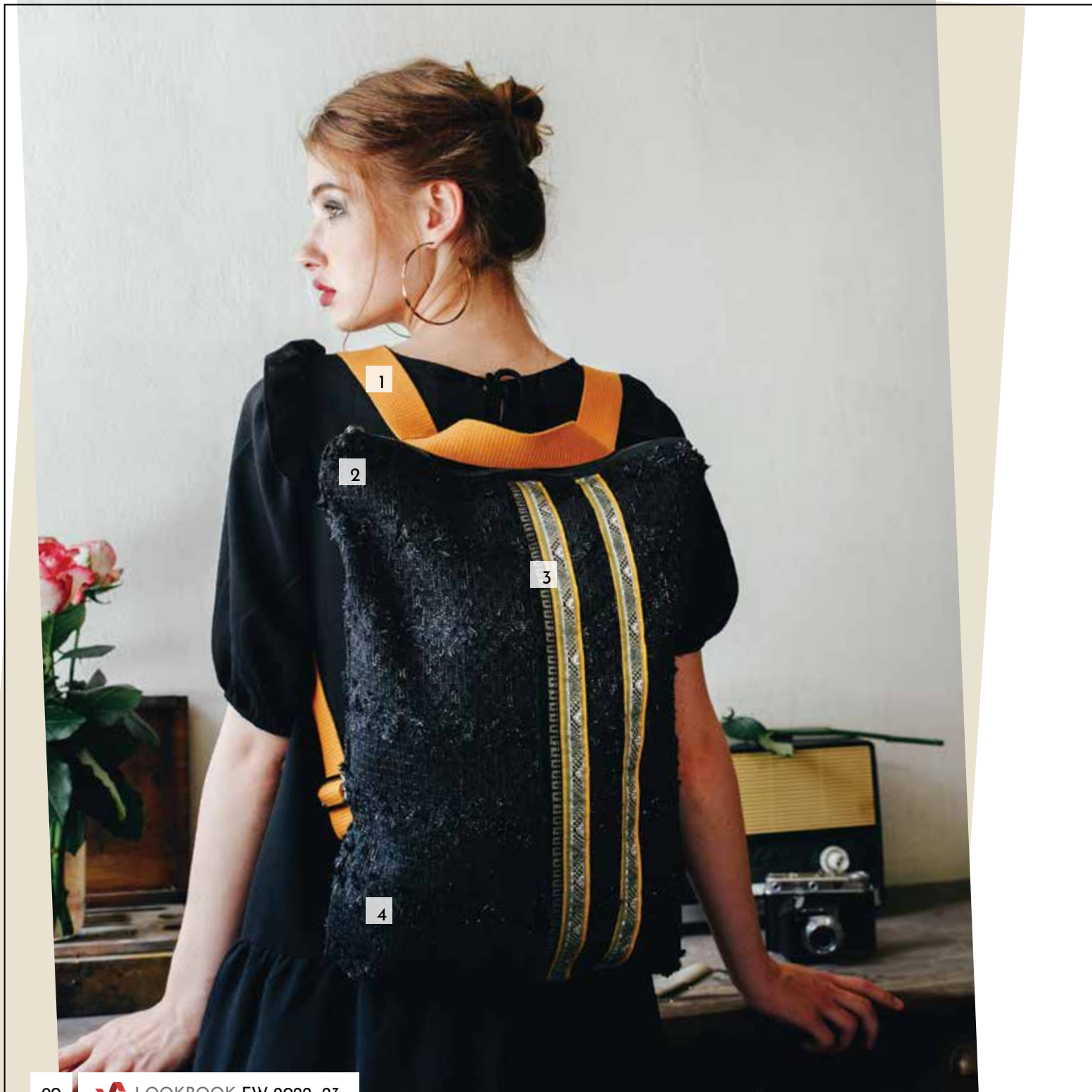
6

# Burnt Orange



An absolutely perfect shade for fall & winter creations... Earthy and joyful, this perfect color features a stunning mix of warm and rich golden orange tones. Associated primarily with leaf fall, looking at it you can hear the whisper of bare trees.





1

2

3

4





1. Tape 1544-5-040-0182  
2. Fabric 321-9-111-001  
3. Ribbon 1896-7-043-0101  
4. Bag 6044-416-0001

5. Elastic 2400-5-050-0147  
6. Elastic 2140-6-080-0107  
7. Elastic 2801-5-060-0103



1. Tape 1379-5-040-0115
2. Tape 1379-5-040-0125
3. Tape 1592-2-040-0117
4. Tape 1557-2-040-0113

5. Tape 1384-5-030-0102
6. Tape 1546-2-040-0111
7. Tape 1385-5-040-0107
8. Tape 1589-1-040-0101



**RE.**

**BIRTH**

**—**



VOSTEX FASHION FW 2022\_23

## **“RE\_BIRTH”**

### **Our Fashion Team!**

---

**Production Management, Creative Concept & Fashion Styling**

George Kitras @gkitras

**Photographer, Photo Editing, Digital Process**

Nerta Gioni @nerta.gioni

**Look Book Layout & Graphic Design**

Raphael @BarelyADesigner

**Hair & Make Up Artist**

Goldy @goldy\_roufogali

**Fashion Model**

Nika @d.skopinska

Ace Models @ace\_models\_athens

**Production Assistant**

George Vlachos @georgios\_vlahos

#VostexFashion Creative Team



**VOSTEX FASHION FW 2022\_23**

**“RE\_BIRTH”**

is published under the trademark license of VOSTEX P.C.,  
12 Ermou str., Metamorphosi, P.C. 144 52, Athens - Greece,

tel: +302105912080,

IG profile: **@vostex**

**[www.vostexfashion.com](http://www.vostexfashion.com)**

Stock photos licensed from Freepik





FW 2022\_23  
RE\_BIRTH